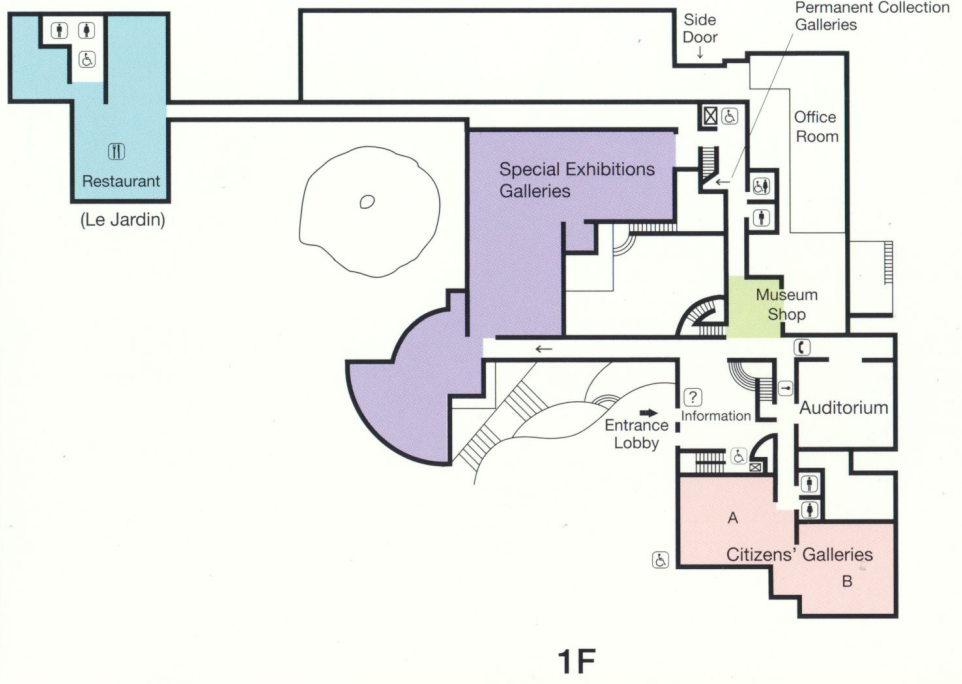


Exhibitions

● Temporary Exhibition Galleries [1,025m²]

Temporary exhibitions are organized independently and in collaboration with other museums in Japan and overseas to present a broad range of art from ancient national treasures to the most radical contemporary experiments. The exhibition space is flexible and, when the large view windows are open, extends into the landscape of the park outside.



● Permanent Collection Galleries [783m²]

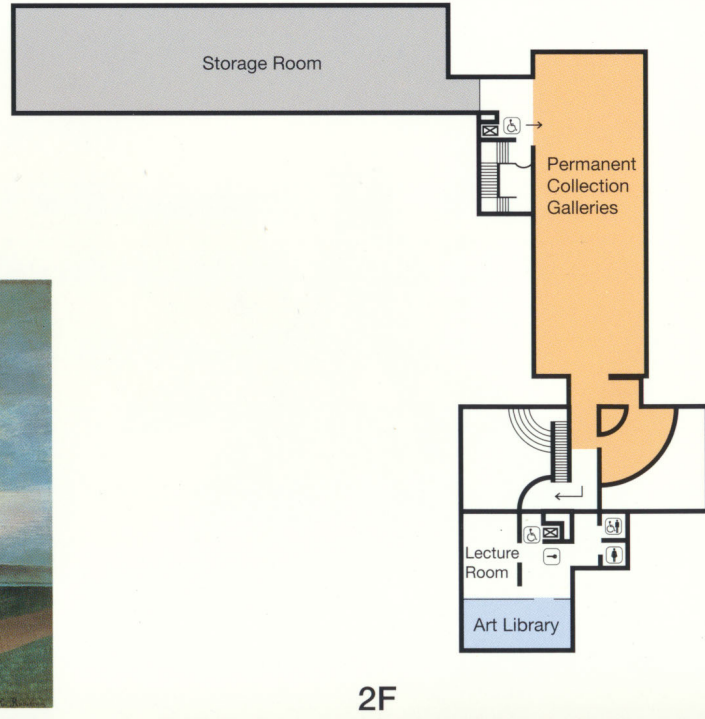
Selected works from the permanent collection, which contains a total of about 6,400 items (as of January 2000) are put on display here, and the exhibitions are changed from time to time. When necessary, these galleries may be used as a secondary space for large temporary exhibitions.



Henri ROUSSEAU "Portrait of Frumence Biche" c.1893

● The Collection

- Modern and Contemporary Art
The museum has assembled an extensive collection, with a special focus on naive art and innovative modern and contemporary art, in order to explore the fundamental nature and meaning of art.
- Works Related to Setagaya
Setagaya City is home to a large number of practicing artists. Their remarkable achievements are an essential part of the museum collection.
- Shioda Collection
This collection of 157 examples of the calligraphy and ceramics of Kitaoji Rosanjin is the bequest of late Iwaji Shioda, a former resident of Setagaya City.



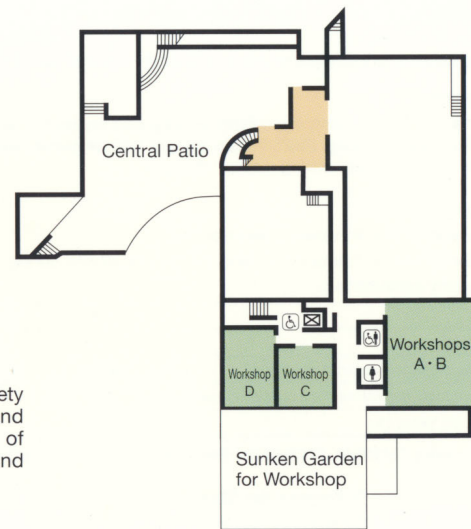
Entertainments, Lectures



In addition to art exhibitions, the museum presents musical concerts, dance and theatrical performances, and films.



The Setagaya Art Museum offers a wide variety of educational programs, classes for old and young that make art an integral part of everyday life, as well as symposiums and lectures related to exhibitions.
* Please contact the museum for details.



● Museum Library

Here visitors can examine catalogues of museum exhibitions plus an extensive collection of art books, magazines, and video tapes.

● Citizens' Galleries

These gallery spaces, ranging in area from 40.0m² to 320.0m², may be rented by members of the general public.

Restaurant, Patio, Museum Shop



● Patio



Restaurant
LE JARDIN

● Le Jardin

The perfect place to enjoy a light lunch or full-course dinner with an entrancing view of Kinuta Park.
Telephone: 03-3415-6415



● Museum Shop

The museum shop is the place to buy exhibition catalogues and picture postcards as well as books and other items related to current exhibitions. It also carries original goods designed especially for the museum.

